

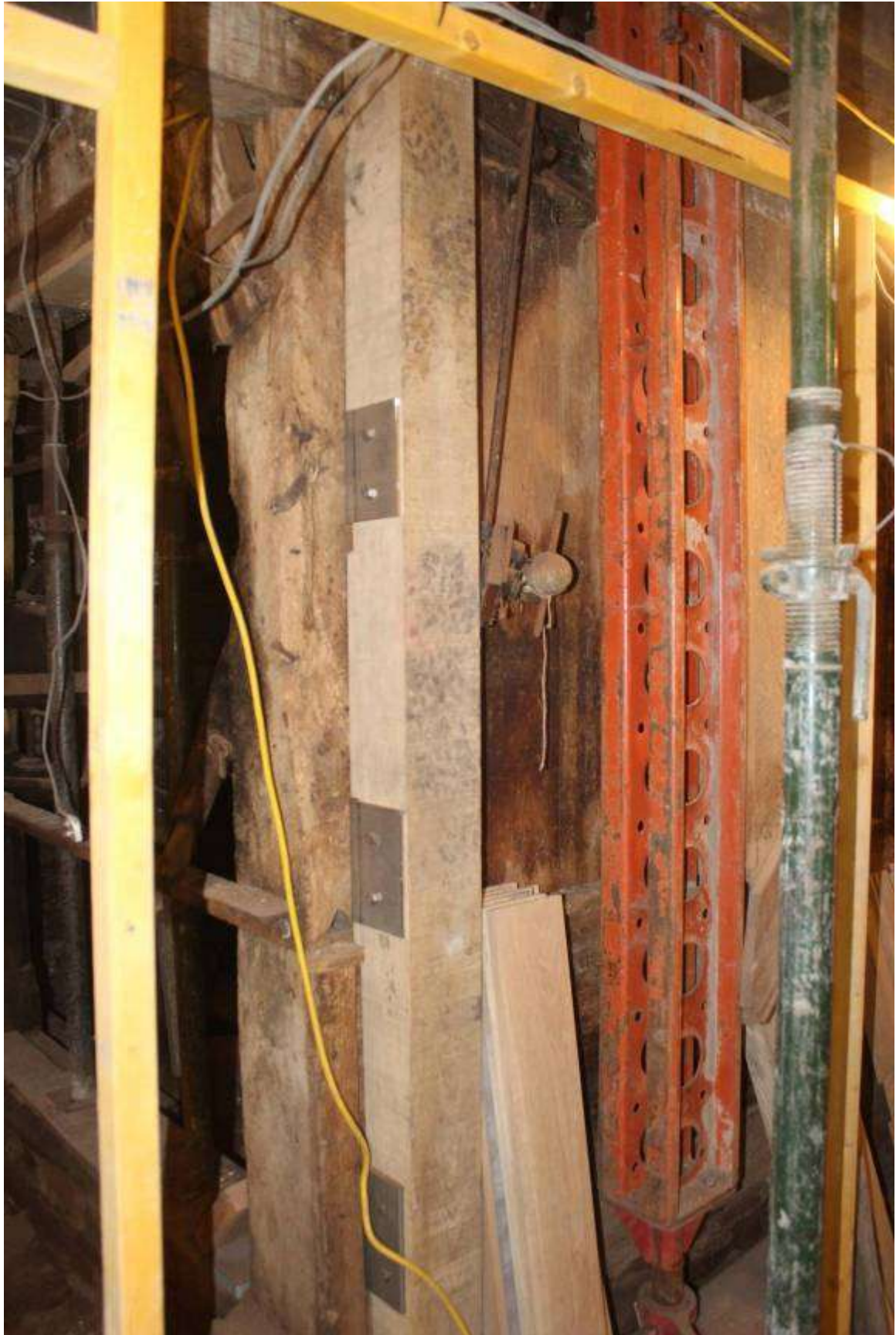
Warwick Bridge Corn Mill Progress February 2019

The month has seen significant progress with the exterior works completed and the scaffolding down and some of the more challenging repairs to major structural timbers within the mill completed. The barn roof was completed and insulation and ceilings have been completed throughout. Internal partitions required for new use of spaces have been commenced.

The repairs to the upstream side of the Hurst have been completed and the failed Garner floor beam which spanned the full width of the mill has been replaced. The beam below it has also proved to be weakened by rot but will be repaired in situ by a resin repair.



A double row of temporary props spanning the Hurst Floor are supporting the weakened Stone Floor beam



The new supporting timber at the NE corner of the Hurst. The steel soldier beam to the right is taking the load from above during the repairs



Repairs to the sill beam on the upstream side of the Hurst



New support block for a staircase beside the drying kiln. The slope of the bedrock here is evident



New Garner Floor Oak beam, installed in two lengths and plated together above the Bowstring Truss added by the Victorians to accommodate the fifth pair of millstones



Partitions being installed over the earlier foundation in the ground floor Store



Digging out softened wood from the Stone Floor beam ahead of resin repairs

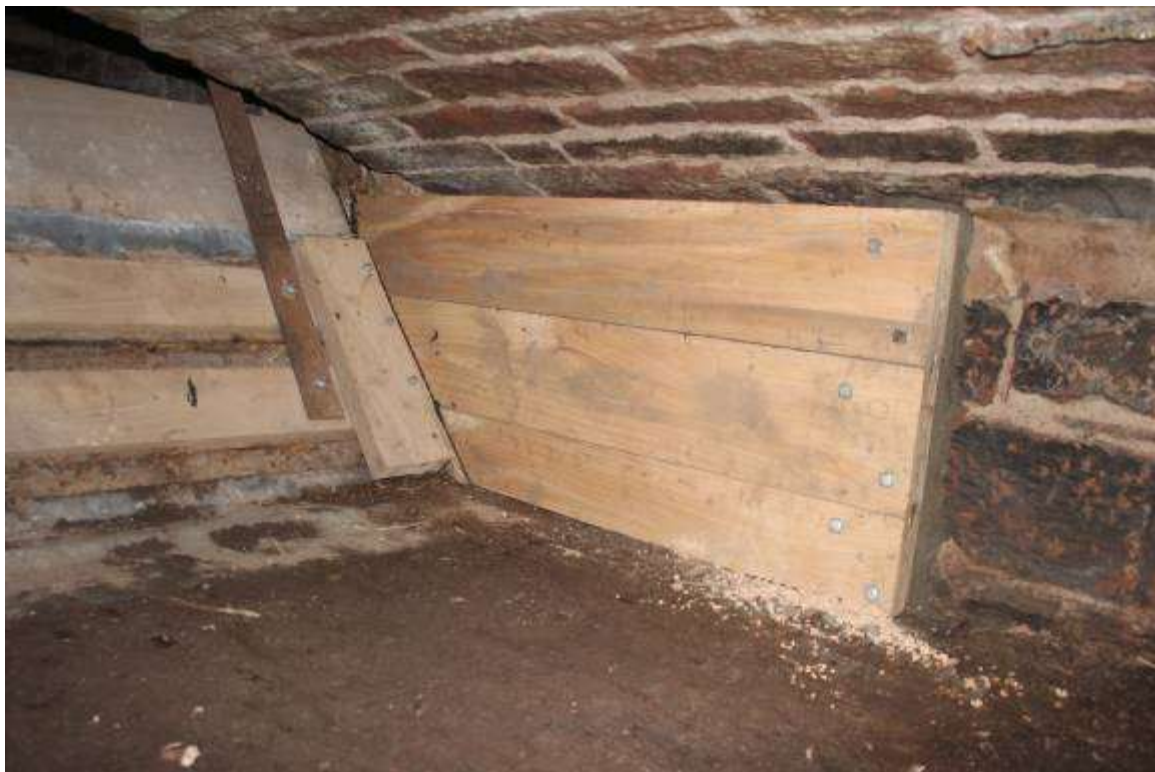
The millwrights have been busy completing the replacement metalwork to the wheel and replacing the timber lining to the sides of the Head Race culvert



Pointing in a new timber for the box lining within the Head Race culvert



Work in progress on the south side of the culvert



New lining timbers completed on the north side of the culvert



Alan putting the finishing touches to the gable of the Barn



Pointing around a repaired louvre on the north side of the Garner Floor



New roof on the barn completed



Scaffolding gone!